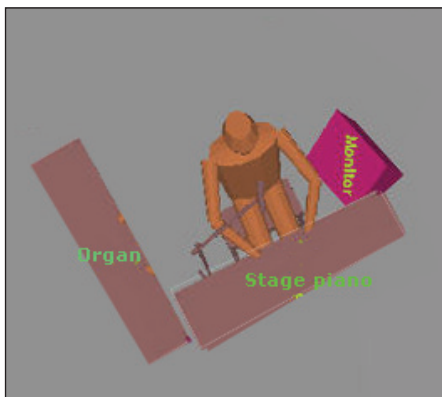




Rider

BACKLINE



ARRANGER

Piano

Roland V-Piano, FP9, FP4, EP 880, FP7 or Yamaha Stage 250 or similar.

Organ

Hammond XB3C or original

Vocal microphone (lead)

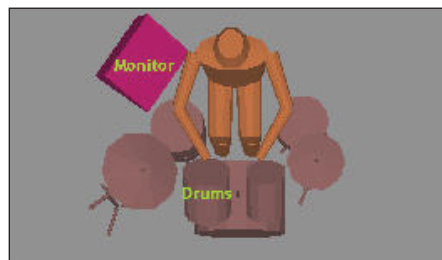
Monitor mix 1

Piano, Organ & Lead vocals

JUMPGOY

Piano/organ

Can bring piano/organ, but only by agreement. Additional costs may be involved.



Drums

Good Quality standard kit with a 22" or 20" kick

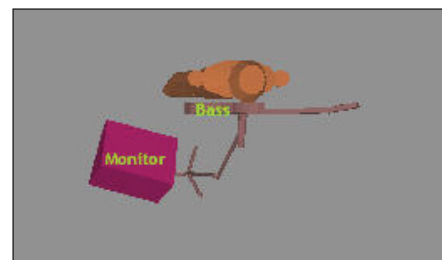
Vocal microphone

Monitor mix 2

Piano, all vocals, sax & bass

Drums

Cymbals



Bass (amp)

Ampeg Combo or top 2/4 X10" or equivalent suited for electric bass

Vocal microphone

Monitor mix 3

Piano, all vocals, sax & drums

Bass (guitar)

Upright, and/or electric



Sax (mike)

An SM57 or better

Vocal microphone

Monitor mix 4

Sax, own vocals

Sax

Tenor, and sometimes an alto
Percussion

MORE

Hotel: Four Single Rooms & ground transportation.

Food: 2 vegetarian/fish, 2 normal, drinks. Minimum 1 hour before concert.

Dressing Room: Separate from audience, close to concert area, shower.

Stage Service: Sound technician & water.

Lighting: Professional stage lighting.

CONTACT

0046-704-888418 (Ulf Sandström)

0046-707-477181 (Bo Gustafsson)

band@jump4joy.se

www.jump4joy.se